

**Shaw
& Co**
ESTATE
AGENTS

£345,000

Hunting Place

Hounslow, TW5 0NP

**Shaw
& Co**

PROPERTY SUMMARY

Shaw & Co present this gorgeous two-bedroom first floor flat in Heston. Located one of Heston's most sought after estates, the property benefits from an allocated parking space, as well as lift access. The property boasts two double bedrooms, a large open plan kitchen and lounge and a family bathroom.

Conveniently located to various local conveniences such as supermarkets, shops, cafes, restaurants, and ample green spaces. The location benefits from excellent transportation options, including frequent bus services and excellent road connections. Hounslow West, Hounslow Central, and Osterley tube stations are all situated a brief distance from the property, providing easy access to various parts of the city.

Additionally, the surrounding area boasts esteemed educational institutions like Westbrook Primary School and Springwell School.

2



2



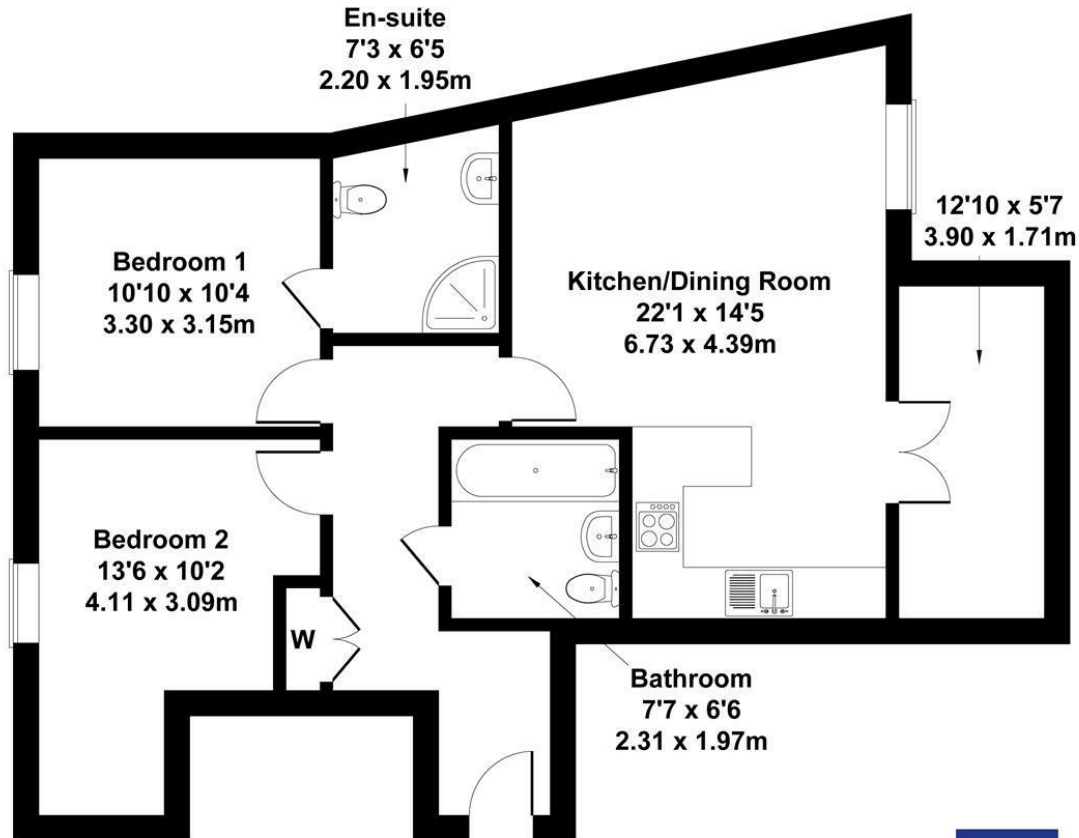
1





Mayfair Court

Approximate Gross Internal Area
797 sq ft - 74 sq m



Not to Scale. Produced by The Plan Portal 2025
For Illustrative Purposes Only.

Shaw
& Co

LOCAL AUTHORITY

Hounslow

TENURE

Leasehold

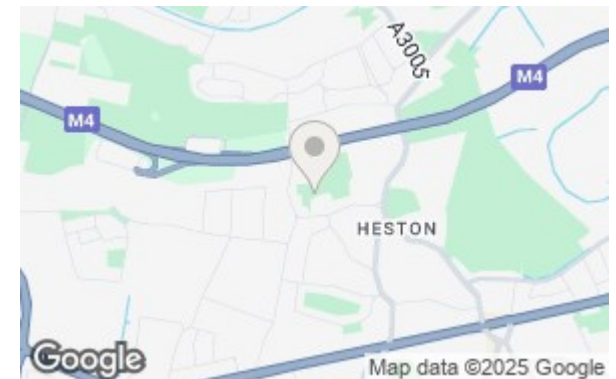
COUNCIL TAX BAND

D

VIEWINGS

By prior appointment only

Energy Efficiency Rating		
	Current	Potential
Very energy efficient - lower running costs		
(92 plus) A		
(81-91) B		
(69-80) C		
(55-68) D		
(39-54) E		
(21-38) F		
(1-20) G		
Not energy efficient - higher running costs		
England & Wales	EU Directive 2002/91/EC	



Agents Note: Whilst every care has been taken to prepare these particulars, they are for guidance purposes only. All measurements are approximate and are for general guidance purposes only and whilst every care has been taken to ensure their accuracy, they should not be relied upon and potential buyers/tenants are advised to recheck the measurements

Shaw
& Co

ESTATE
AGENTS

OFFICE ADDRESS

10 Central Parade
New Heston Road
Heston
Middlesex
TW5 0LJ

OFFICE DETAILS

0208 570 7258
heston@shawandcoestates.com